

Flow Control Valve NG 6 Technical Data Sheet



- Flow from 10 cm³/min
- Reproducibility even with low flow rates
- Fluid flow can be controlled nearly independently of pressure and viscosity
- Control range of up to 3 rotations
- Sensitive adjustment
- Connection according to ISO 4401

Technical Data

General

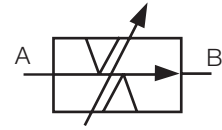
Type of valve	gap-type throttle valve
Operation	rotary knob
Angle of rotation, 1 rotation	330°
Angle of rotation, 2 rotations	690°
Angle of rotation, 3 rotations	1050°
Valve mounting	2x M5 x50 DIN912
Connection of ports	mounting plate
Mounting position	mountable in any position
Ambient temperature	-5°C to +50°C
Mass valve	1 kg

Hydraulic

Operation pressure A, B	max. 250 bar
Hydraulic oil temperature	-10 to +70 °C
Viscosity range	10 to 300 mm ² /s
Rate of flow	max. 9 l/min

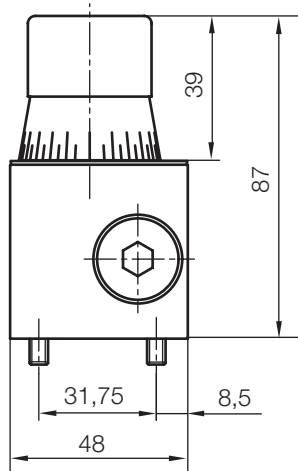
Symbol

20

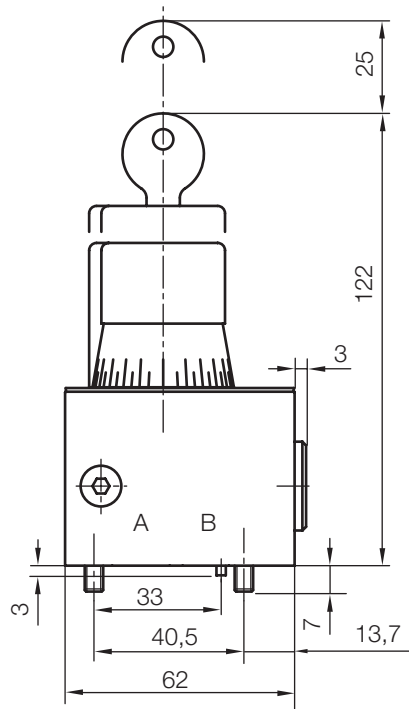


Flow Range

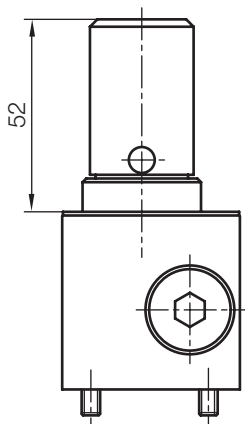
Flow [cm ³ /min]		Code	Rotation		
min	max		1 (330°)	2 (690°)	3 (1050°)
10	100	0.1	X		
10	200	0.2	X		
10	400	0.4	X		
25	500	0.5	X		
25	700	0.7	X		
50	1500	1.5	X	X	
100	3000	3.0	X		
150	6000	6.0	X	X	
20	8000	8.0		X	X
20	1200	1.2		X	X
20	3000	3.0		X	
20	6000	6.0			X
20	9000	9.0		X	



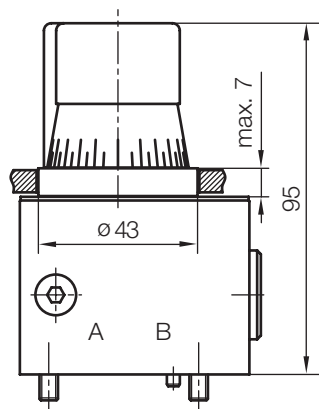
actuation D



actuation V

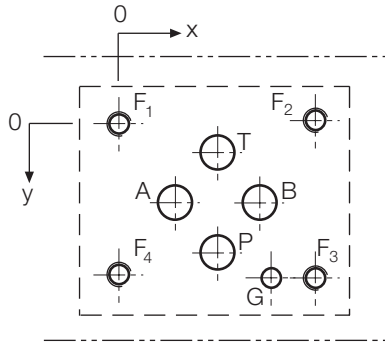


actuation K and P



front panel mounting

Port Connection Pattern NG 6 ISO 4401



The figure shows the side of the mounting plate to which the valve is fastened.

	P	A	T	B	F1	F2	F3	F4	G
Ø max [mm]	7.5	7.5	7.5	7.5	-	-	-	-	4
x [mm]	21.5	12.7	21.5	30.2	0	40.5	40.5	0	33
y [mm]	25.9	15.5	5.1	15.5	0	-0.75	31.75	31	31.75

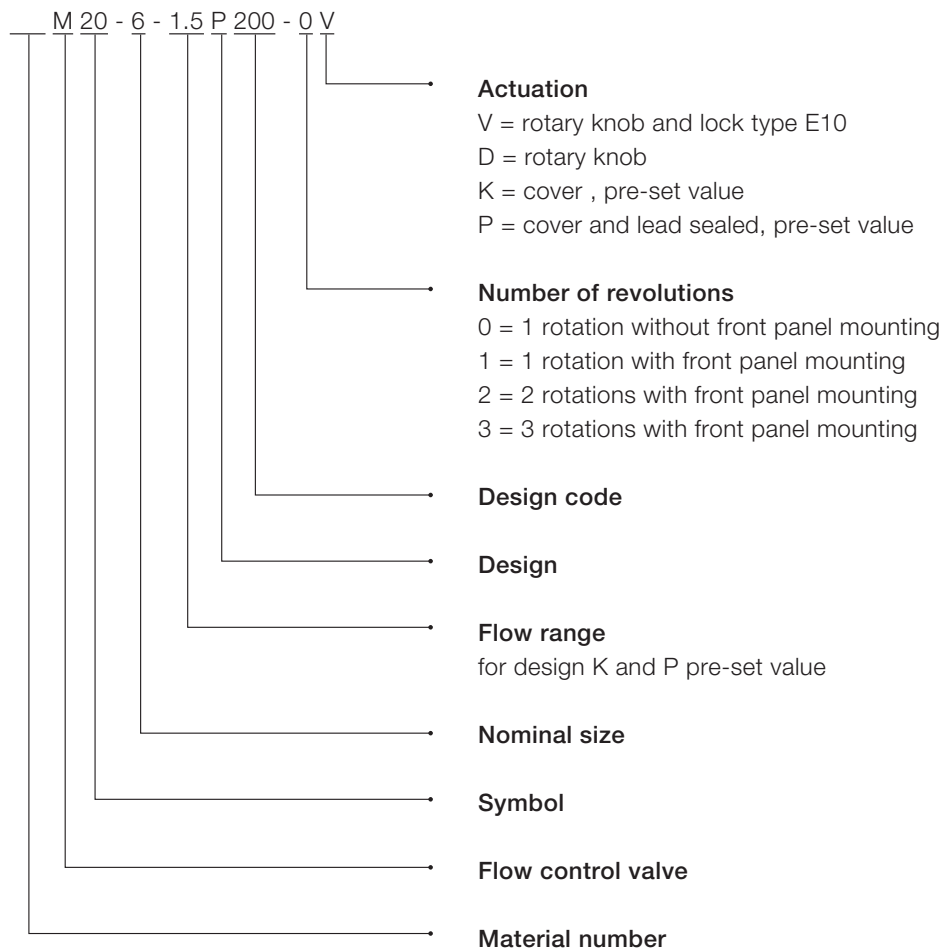
F: M5, thread depth min. $1.5 \times \varnothing$

G: hole depth min. $1.5 \times \varnothing$

For connection of the flow control valve, the ports A and B are used.

Various single and multiple mounting plates are available.

Type Code



Voith Turbo H + L Hydraulic GmbH & Co. KG
Schuckertstraße 15
71277 Rutesheim, Germany
Tel. +49 7152 992 3
Fax +49 7152 992 400
sales-rut@voith.com
www.voith.com/hydraulic-systems



VOITH
Engineered Reliability